



WILDLIFE RESCUE

A Second Chance at Flight

Wildlife Rescue Annual Report 2025

www.raptorrescue.org





Black Kites

3,341 Rescued

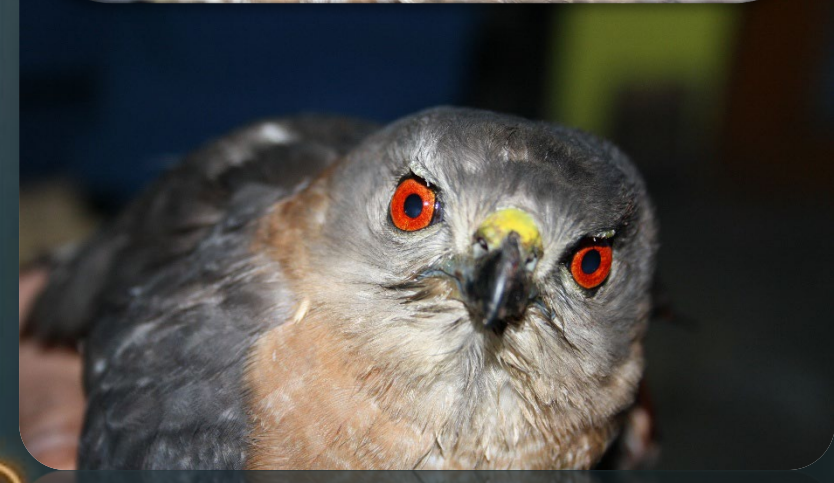
The primary victims of urban architectural and aerial hazards.



Barn Owls

150 Rescued

Crucial nocturnal pest controllers.



Shikras

72 Rescued

High-speed, agile urban raptors.



Critical Intervention: The Egyptian Vulture

8 Rescued &
Rehabilitated in 2025

Specialized care protocols deploy our most advanced technology to ensure the survival of this globally endangered species. Every single life saved is a statistical victory for the species.

The Urban Hazard: Manjha Lacerations

Synthetic kite strings cause catastrophic mid-air amputations and deep tissue severing.



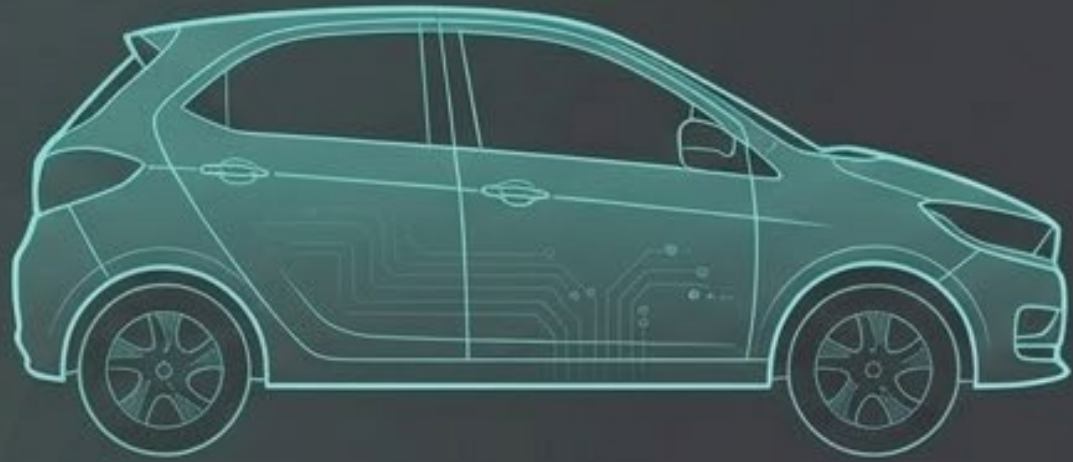
The Critical Zone: The Patagium

This vital aerodynamic wing membrane requires highly specialized surgical reconstruction to restore the ability to fly. Standard suturing is insufficient.

-  SPECIALIZED RECONSTRUCTION REQUIRED
-  HIGH-PRECISION MICRO-SURGERY

Vanguard Logistics & Green Extraction

Sustainable Transit



Tata Tiago EV Rescue Vehicle

Zero-emission logistics ensuring our environmental mission extends to our transport. Rapid transit from danger zone to facility.

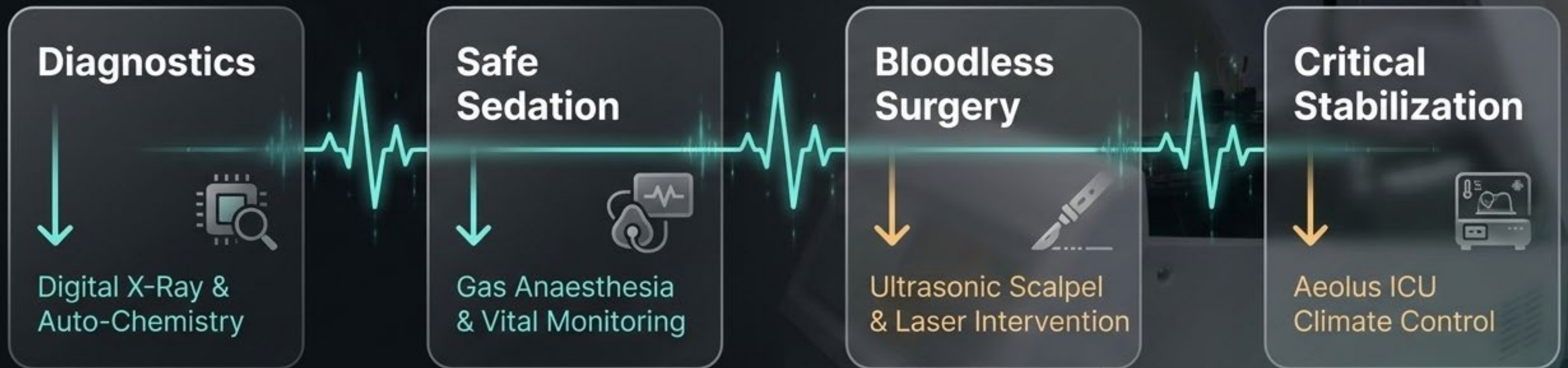
Precision Extraction



Carbon Fiber Rescue Poles

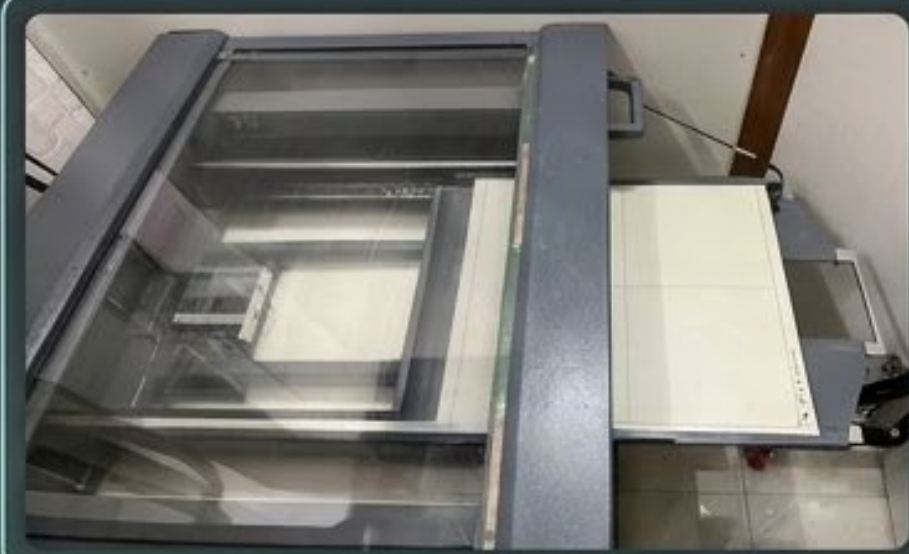
Ultra-lightweight reach. Allows rescuers to safely extract panicked, injured birds from cramped spaces and water hazards without breaching the danger zone.

The 2025 Avian ER Upgrade



Advanced Diagnostics

Structural Analysis



Diagnostic matrix

	A	B	T
1	370	•	3000
2	350	•	5000
3	800	•	5000
4	120	•	1000
5	030	•	5000



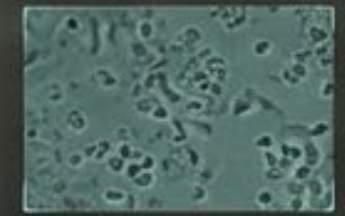
Digital X-Ray DR System

Immediate, high-resolution musculo-skeletal imaging to identify micro-fractures and structural wing damage.

Physiological Analysis



Microscopic



PUn	24.50
Mog	23.50
Totl	28.30
Max	8.50
Sep	3.98
Des	3.59
SOS	8.50



Automatic Chemistry Analyser & Digital Microscope

Fully automated laboratory measurement of physiological fluids (blood, serum, plasma, feces) and blood counts to detect systemic infections prior to surgery.

The Sedation Safenet



Isoflurane Gas Anaesthesia Machine

Provides highly controlled, inhaled sedation. Critical for avian patients, allowing for deep surgical sleep with a safe, rapid-recovery wake-up phase within minutes.



5-Parameter Vital Signs Monitor

- Real-time continuous tracking
- Temperature & Blood Pressure
- SpO2 & CO2 Levels
- ECG (Electrocardiogram)

Bloodless Intervention: Rebuilding the Patagium



Ultrasonic Scalpel & Vessel Sealer

Utilizes advanced ultrasonic frequencies to simultaneously cut soft tissue and hermetically seal vessels.

The Impact: Minimizes catastrophic blood loss during complex, delicate wing reconstructions—the difference between life and death for Manjha victims.



Microwave Ablation & Laser Surgery

Non-invasive tumor management and bleeding-less laser precision for exact tissue repair.

Post-Trauma Climate Control



Automated **Temperature & Humidity Regulation** (vital for unfeathered baby birds).

Oxygen and CO2 atmospheric control.

Integrated **nebulization** for respiratory distress.



Focus:

Creates an artificial, stabilized micro-environment to pull fragile trauma patients and orphaned fledglings back from the brink of shock.

Accelerated Healing & Facility Biosafety



Portable Laser Therapy

Cold light therapy to dramatically accelerate cell regeneration and recovery from internal/external trauma.



Blood Centrifuge

Rapid separation of whole blood into RBCs, plasma, and platelets for targeted transfusions and diagnostics.



Ozonised Water Disinfection

Hospital-grade surface and wound sterilization without leaching toxic chemicals into the environment.



Thermodynamic Bird Dryers & Automatic Autoclave

Temperature-controlled air flow to prevent hypothermia post-wash, paired with high-pressure steam sterilization for surgical instruments.

A brown bird of prey, possibly a falcon or hawk, is lying on a white operating table. The bird is facing right and has a yellow beak. It is connected to a green medical device, likely an endotracheal tube, which is inserted into its mouth. The background is a dimly lit operating room with various pieces of medical equipment, including monitors and cables. A person in teal scrubs is partially visible in the background, working on the bird. The overall scene is a medical procedure being performed on a wild bird.

From the Operating Table to the Open Sky.

Every piece of technology, every late-night surgery, and every kilometer driven serves one singular purpose: to give them back to the wild.

4,214 second chances at flight.



Support Wildlife Rescue

Your donations directly fund the technology and the teams that make these recoveries possible.



A/c Holder: Wildlife Rescue
Bank: HDFC Bank
A/c no.: 50100181991374
IFSC Code: HDFC0000558
Branch: Ajmeri Gate